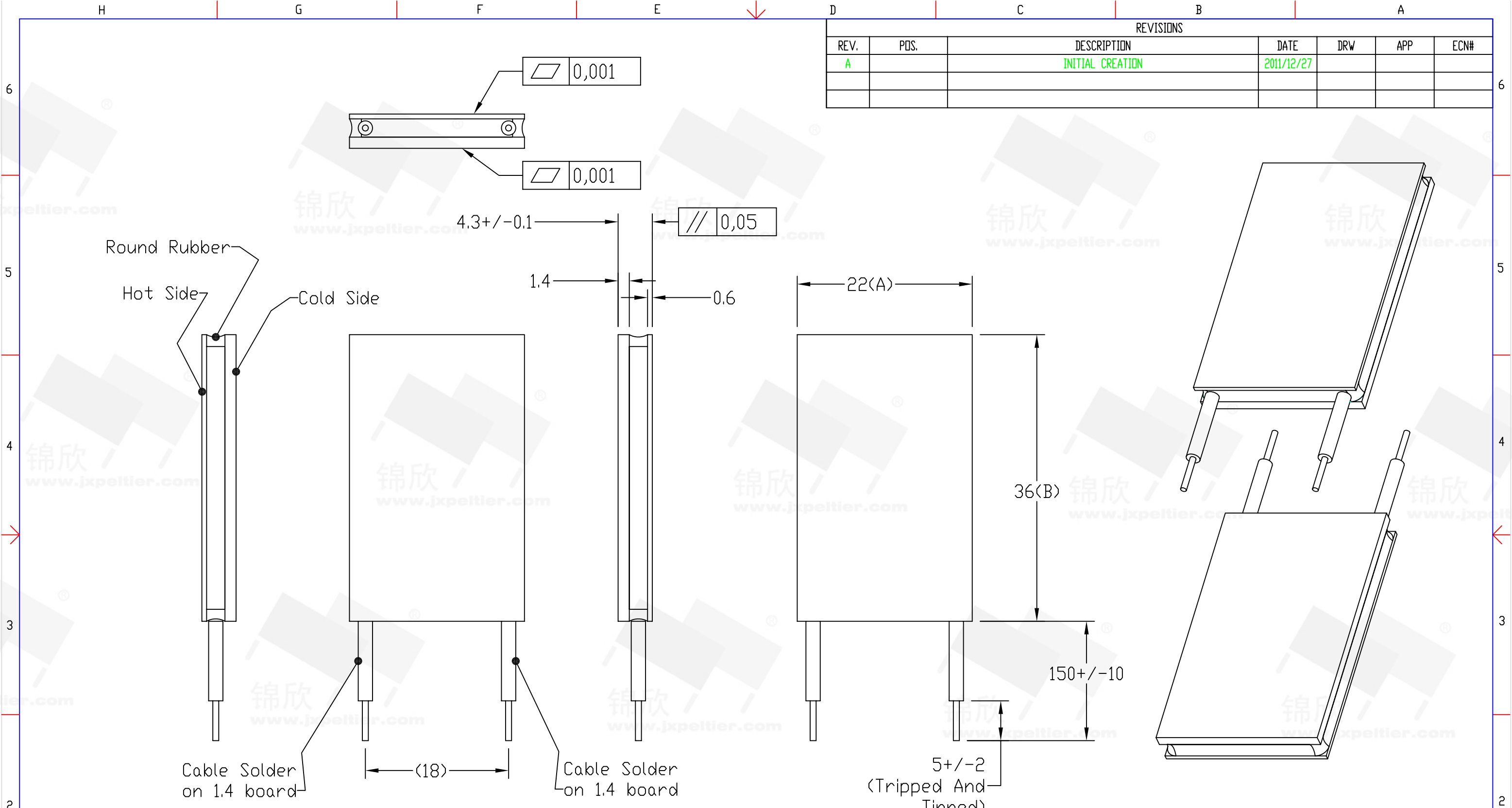


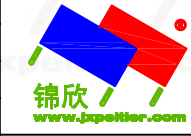
REVISIONS						
REV.	POS.	DESCRIPTION	DATE	DRW	APP	ECN#
A		INITIAL CREATION	2011/12/27			



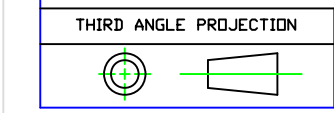
TEC 1 - 200 02 22 36

热致冷组件代号  
陶瓷结构式  
电堆级数  
电堆对数 (1.6\*0.7平方)  
最大电流A  
A向尺寸  
B向尺寸

序号	型号	电堆数	最大电流	最大电压	最大冷量(W)	最大温差(°C)	外形尺寸(MM)			电阻	重量
ITEM	PART NUMBER	COUPLES	A (MAX)	V (MAX)	室温环境TH=27°		A	B	H 实物为准	Ω	g
1	TEC1-200022236	200	2	26	48	68	22	36	4.3	--	--

1. UNLESS OTHERWISE SPECIFIED, DIMENSIONS ARE MM 2. TOLERANCE ARE AS FOLLOWS: 0 < X < 2 ± 0.06 2 < X < 10 ± 0.08 10 < X < 50 ± 0.12 50 < X < 100 ± 0.16 100 < X < 200 ± 0.20 200 < X < 300 ± 0.30 ANGLES ± 0.5°	Part NO.	TEC1-200022236	DESCRIPTION	26V(Max)/2A(Max)/200对P&N高敏粒子/0.6mm长150mm引线		
	SIGNATURE		DATE	 锦欣制冷(苏州)有限公司 <b>JXPeltier (SUZHOU) CO., LTD</b> Tel/Fax: +86-512-62539286 Mobile: +86-18061938176 emailto: jxpeltier@gmail.com http://www.jxpeltier.com		
	DRAWN BY	GARY	2011/12/27			
	CHECKED BY					
ENGR						
APPROVED BY			CAD MDDLE: TEC1-200022236.prt	SCALE: 1:1	REV: A	
MATERIAL:	ISSUED BY		CAD DWG: TEC1-200022236.dwg	SIZE: A3	SHEET: 1 OF 1	

\*DO NOT SCALE DRAWING



THIS DRAWING AND THE DATA DISCLOSED HEREIN OR HEREWITH IS NOT TO BE REPR ODUCE  
USED OR DISCLOSED OR IN PART TO ANYONE WITHOUT THE PERMISSION OF JXPeltier (SUZHOU)  
CO., LTD.