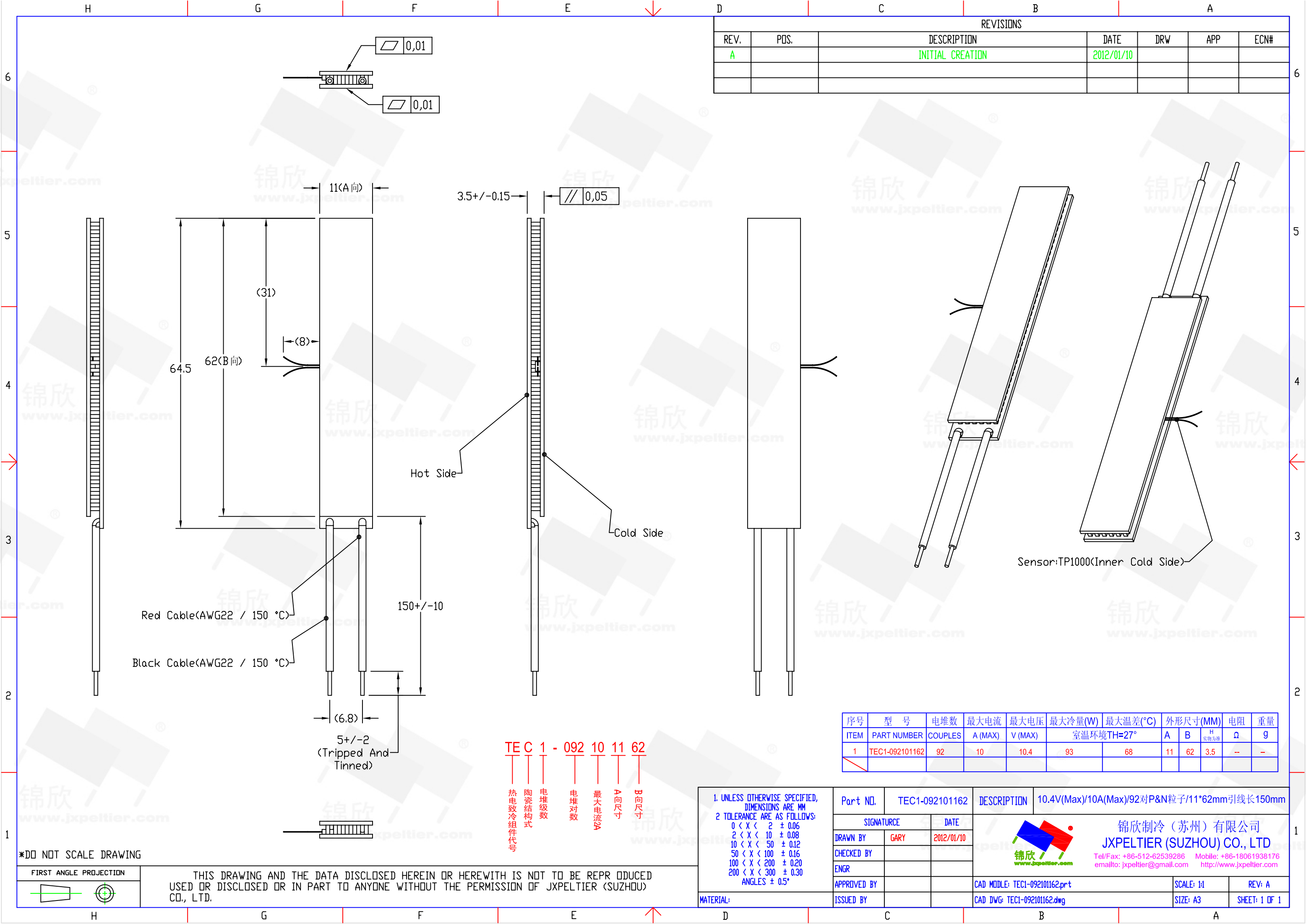


REVISIONS						
REV.	POS.	DESCRIPTION	DATE	DRW	APP	ECN#
A		INITIAL CREATION	2012/01/10			



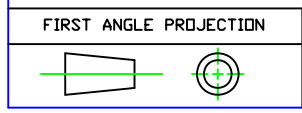
Red Cable(AWG22 / 150 °C)
 Black Cable(AWG22 / 150 °C)
 150+/-10
 5+/-2
 (Tripped And Tinned)

TE C 1 - 092 10 11 62
 热电致冷组件代号
 陶瓷结构式
 电堆级数
 电堆对数
 最大电流A
 P向尺寸
 H向尺寸

序号	型号	电堆数	最大电流	最大电压	最大冷量(W)	最大温差(°C)	外形尺寸(MM)			电阻	重量
ITEM	PART NUMBER	COUPLES	A (MAX)	V (MAX)	室温环境TH=27°		A	B	H 实物为准	Ω	g
1	TEC1-092101162	92	10	10.4	93	68	11	62	3.5	--	--

1. UNLESS OTHERWISE SPECIFIED, DIMENSIONS ARE MM 2. TOLERANCE ARE AS FOLLOWS: 0 < X < 2 ± 0.06 2 < X < 10 ± 0.08 10 < X < 50 ± 0.12 50 < X < 100 ± 0.16 100 < X < 200 ± 0.20 200 < X < 300 ± 0.30 ANGLES ± 0.5°	Part NO.	TEC1-092101162	DESCRIPTION	10.4V(Max)/10A(Max)/92对P&N粒子/11*62mm引线长150mm			
	SIGNATURE	DATE	锦欣制冷(苏州)有限公司 JXPELTIER (SUZHOU) CO., LTD Tel/Fax: +86-512-62539286 Mobile: +86-18061938176 emailto: jxpeltier@gmail.com http://www.jxpeltier.com				
	DRAWN BY	GARY					2012/01/10
	CHECKED BY						
ENGR							
APPROVED BY			CAD MDDLE: TEC1-092101162.prt	SCALE: 1:1	REV: A		
MATERIAL:	ISSUED BY		CAD DWG: TEC1-092101162.dwg	SIZE: A3	SHEET: 1 OF 1		

*DO NOT SCALE DRAWING



THIS DRAWING AND THE DATA DISCLOSED HEREIN OR HEREWITH IS NOT TO BE REPRODUCED USED OR DISCLOSED OR IN PART TO ANYONE WITHOUT THE PERMISSION OF JXPELTIER (SUZHOU) CO., LTD.